

# PLEA FOR A CAPITAL FINANCED UBI

Joern Hendrichs



UBI Fund





# GiveDirectly

Send money directly to people who need it most.

Your donation empowers families in poverty to choose how best to improve their lives.

ONCE

MONTHLY

\$40

\$100

\$500

Other

Give now

Poverty relief - Africa ([edit program](#))

Leonard & Mercy in Malawi

“ Evidence was extracted from 165 studies, covering 56 cash transfer programmes in low- and middle-income countries ... There is strong evidence that cash transfers are associated with reductions in monetary poverty. ([source](#))



“ Cash transfers have the strongest track record we've seen for a non-health intervention, and are a priority program of ours. ([source](#))



“ Cash transfers are more cost effective than vouchers which are more cost effective than in-kind food assistance. ([source](#))



“ Cash transfers are one of the more thoroughly researched forms of development intervention. ([source](#))



# Was würdest du tun, wenn du plötzlich Grundeinkommen hättest?

Finde es heraus! Wir verlosen Grundeinkommen. **Bedingungslos.**

[Jetzt teilnehmen](#)

[Mehr erfahren](#)

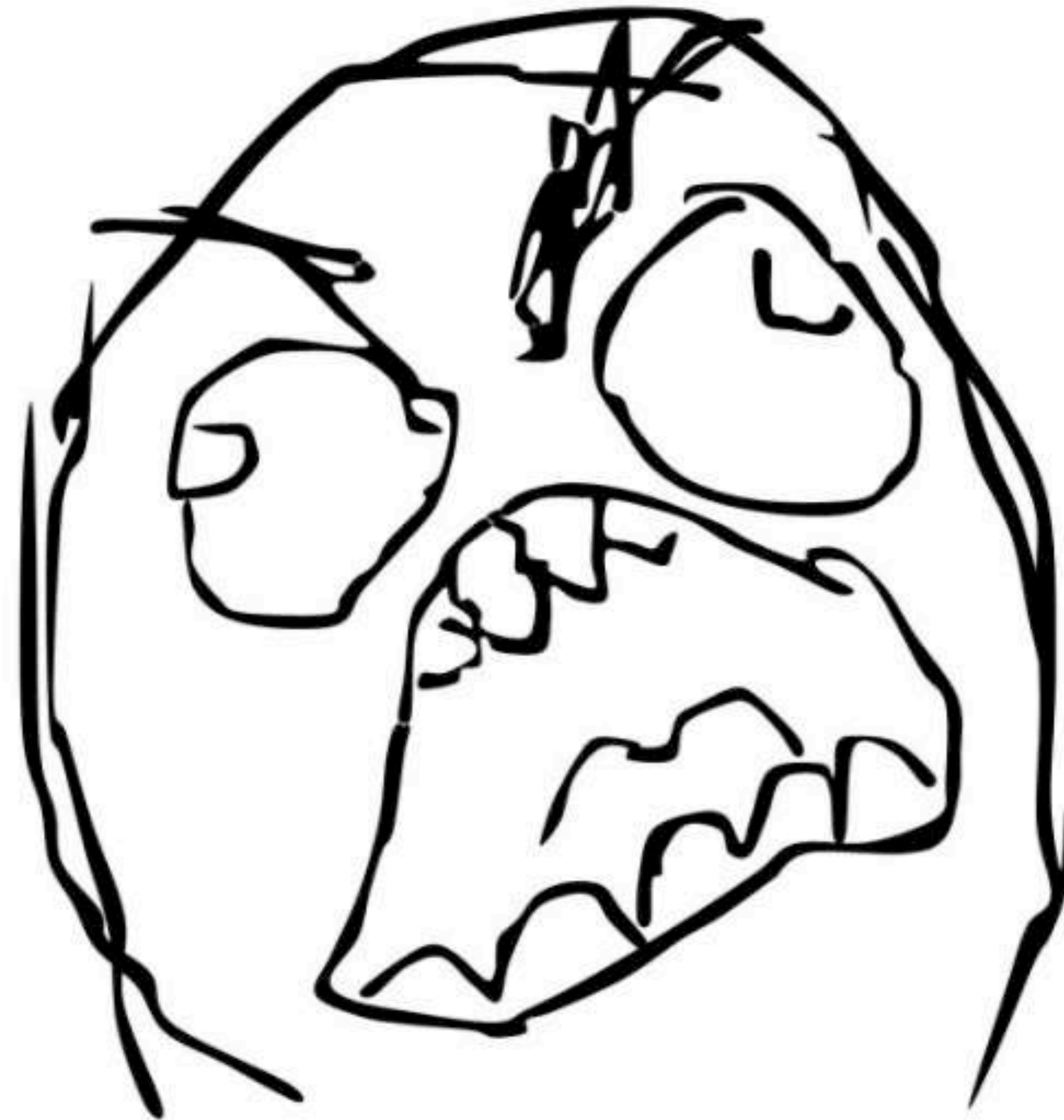


**Die nächste Verlosung: 16. August 2023**

Jetzt kostenlos anmelden und ein Jahr lang jeden Monat 1.000 Euro erhalten. Ohne Bedingungen.

[Ich möchte gewinnen](#)

**BUT HOW DO WE PAY FOR IT????**

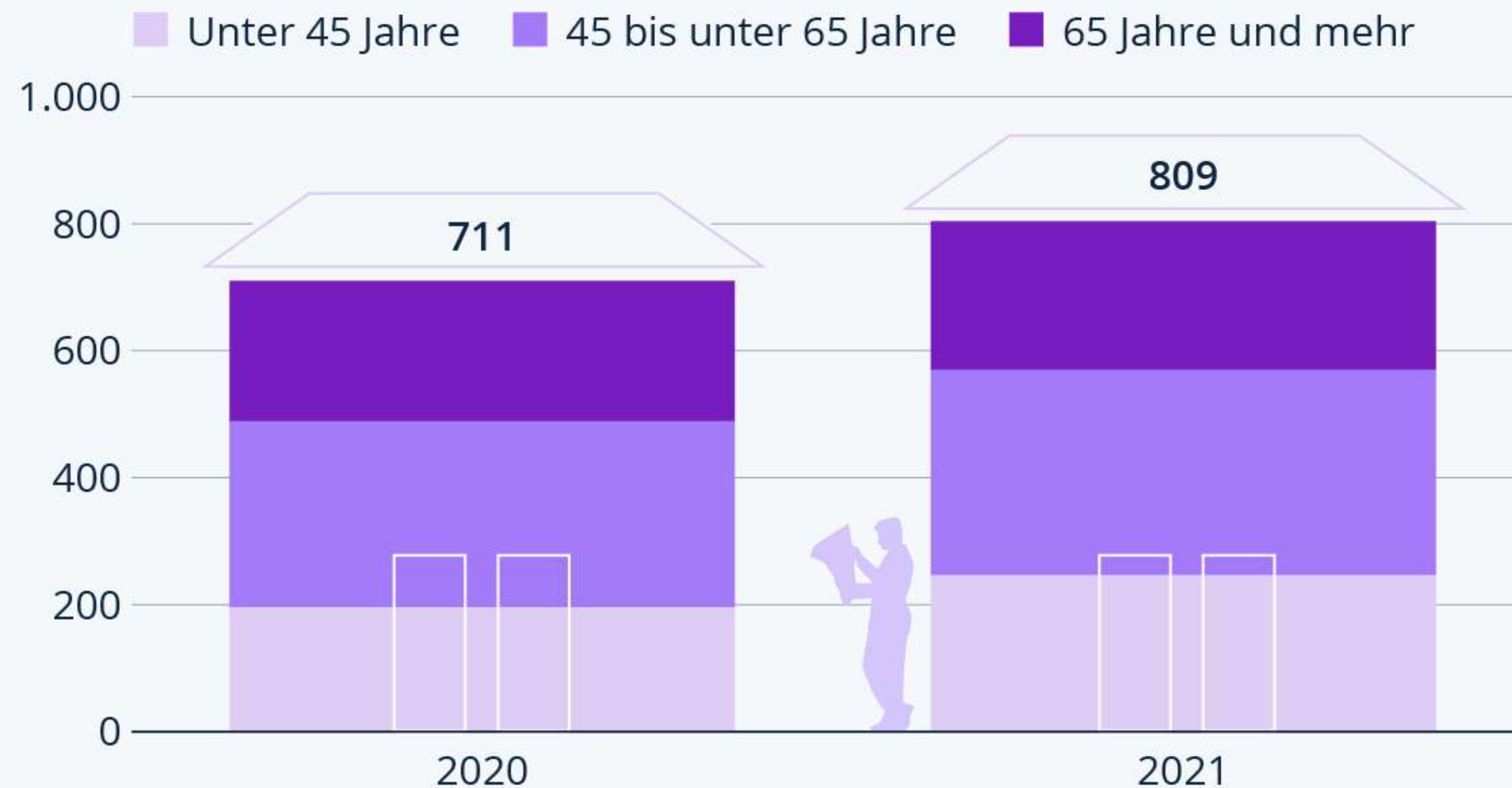






# 809.000 Deutsche müssen nicht arbeiten

Anzahl der Menschen in Deutschland, die überwiegend von ihrem eigenen Vermögen leben (in 1.000)\*



\* überwiegender Lebensunterhalt durch eigenes Vermögen, Vermietung, Zinsen, Altenteil

Quelle: Statistisches Bundesamt



The fund's market value

**14 739 206 127 729** NOK

We work to safeguard and build  
financial wealth for future generations

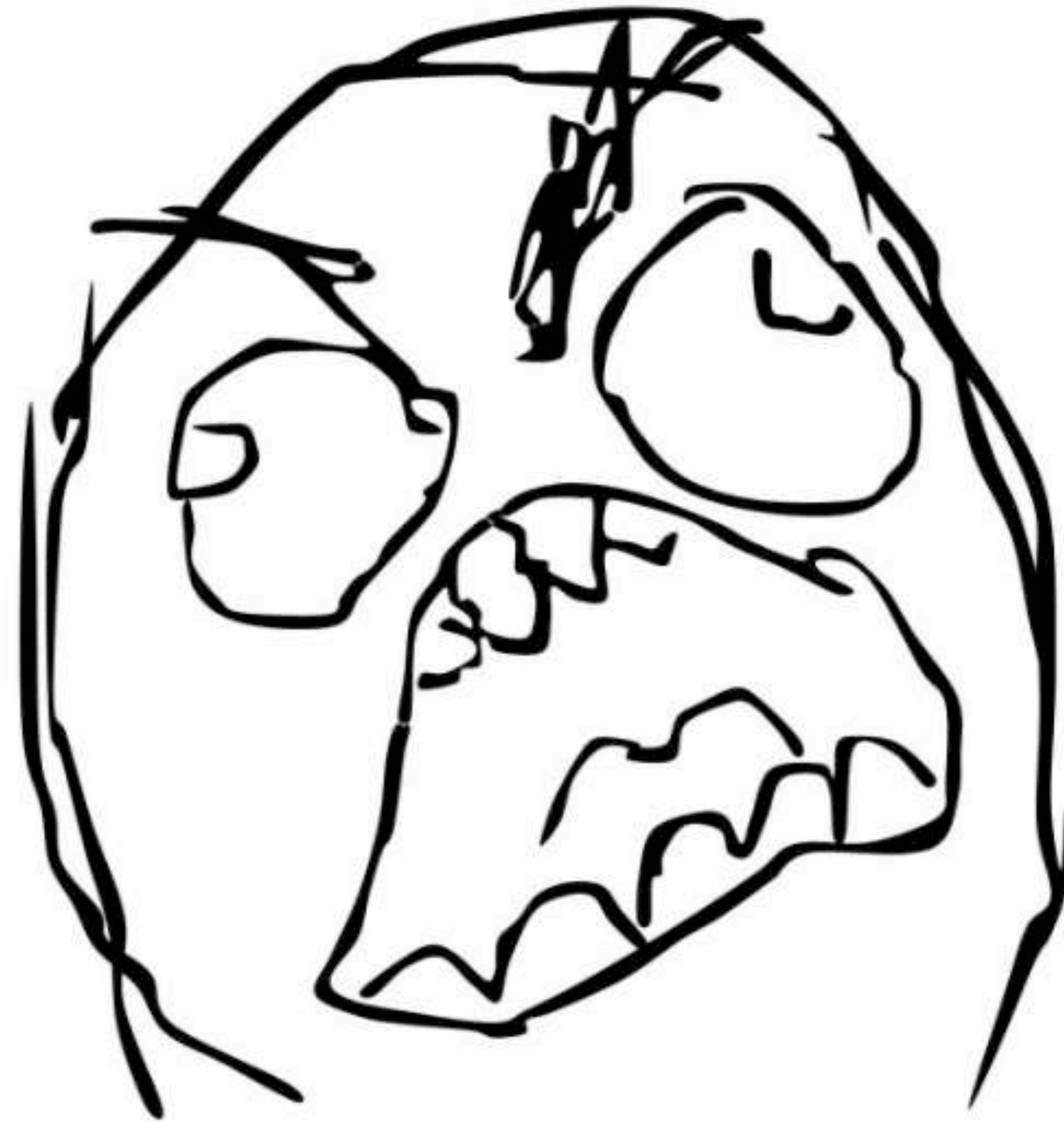






**UBI Fund**

**BUT HOW DO WE PAY FOR IT????**





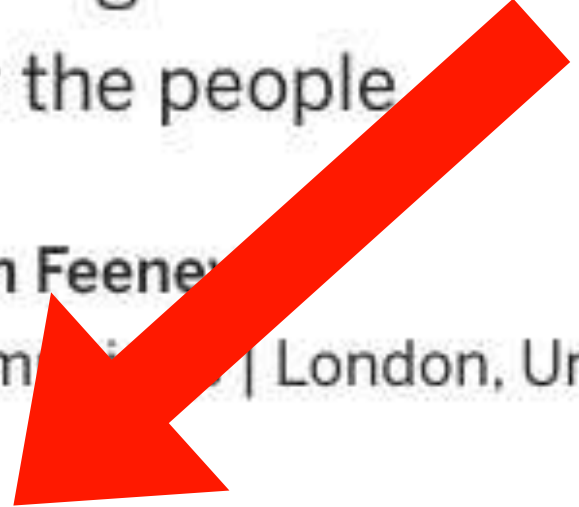
CLOSED

# Greek Bailout Fund

CrowdFunding a bailout fund for Greece. By the people, for the people



Thom Feener  
2 Cambridge | London, United Kingdom



€1.930.252 EUR

108.631 backers

0% of €1.600.000.000 Fixed Goal

FOLLOW

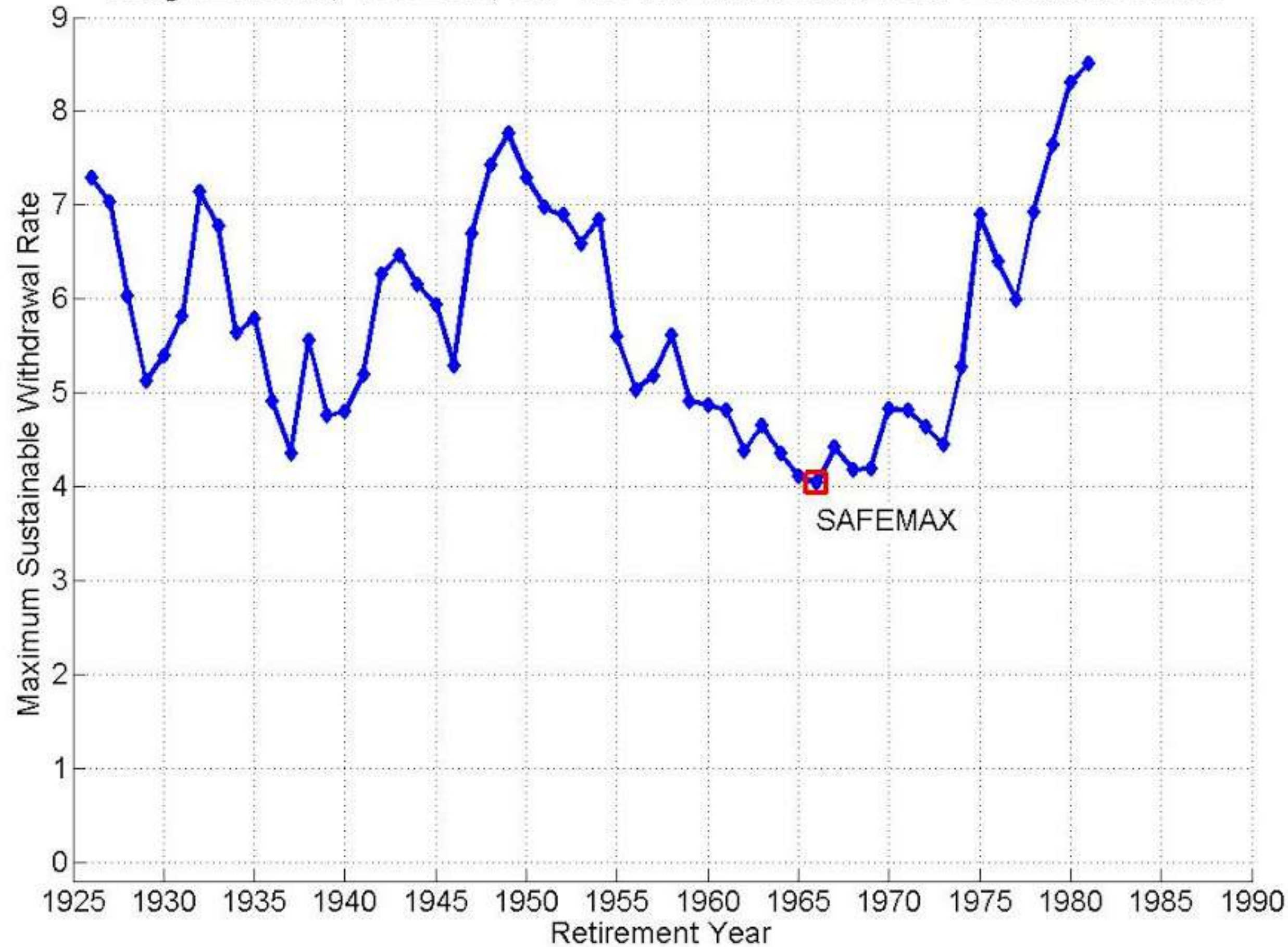


# WHICH RETURN CAN BE EXPECTED?

Figure 2.1

Maximum Sustainable Withdrawal Rates

For 50/50 Asset Allocation, 30-Year Retirement Duration, Inflation Adjustments, No Fees  
Using SBBI Data, 1926-2010, S&P 500 and Intermediate-Term Government Bonds



**40.000 \$**

**3 % = 1.200 \$**

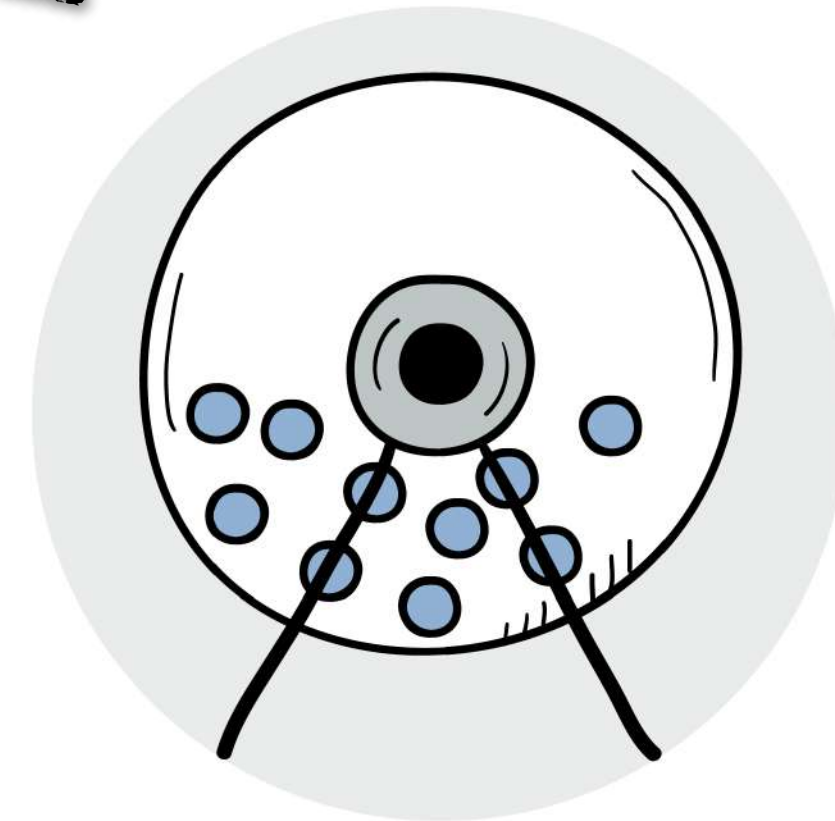
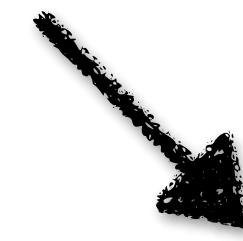
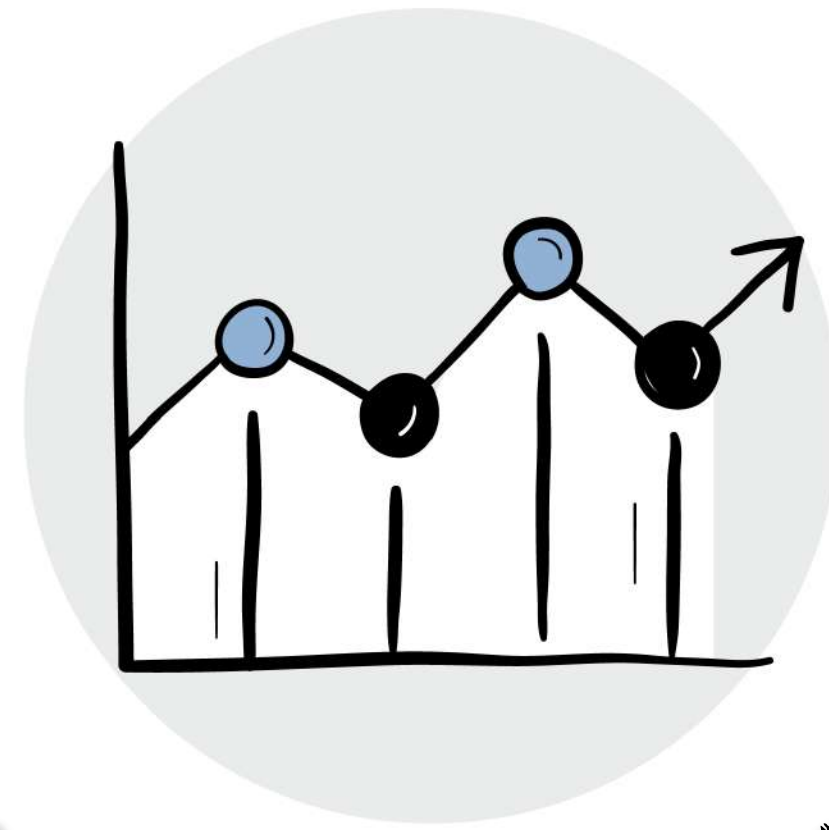
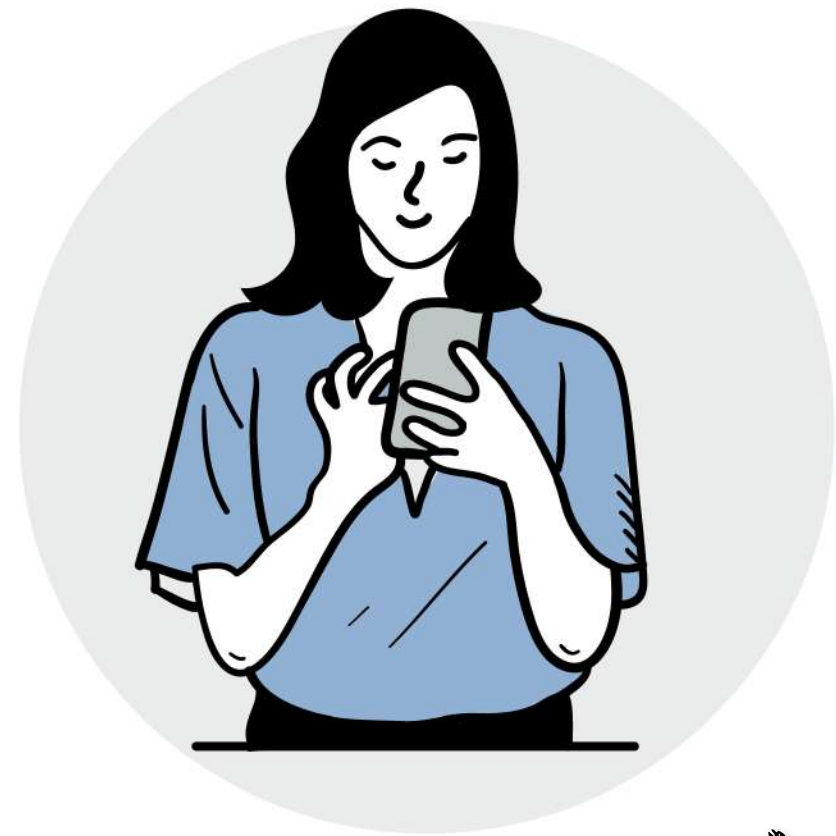
**100 \$/month**

**How do we get there?**





# UBI Fund



*Thank you*

